

WHELEN® 2910 10 Cell Siren

Mass Notification Warning System

Whelen's All-Hazard WPS2900 series omni-directional high-power voice and siren systems deliver clear, powerful voice and siren communication.

System Features

- **WPS2910** - Ten Omni-Directional Speaker Cells Assembled in a Vertical Column
- Three Compartment (Type III) Natural Finish Aluminum Cabinet
- 129dB @ 100'
- WPS2910 Speaker Cell Includes Ten High Efficiency 400 Watt EZ-PULL™ Speaker Drivers
- 50' Cable Included
- Pole Top Mounting Bracket Included
- Public Address Capability
- Battery Powered, Minimum of 30 Minutes of Full Power Output with Batteries of our Recommendation
- AC Temperature Compensated 10 Amp Battery Charger
- Local Controls or Remote Controls
- Ten Power Amplifiers
- Electronic Siren Controller
- Tone Generator
- Timer
- Local Control Push Buttons
- Battery Switch
- SI TEST®
- Battery Tray
- Lightning Arrestor
- Six Standard Public Warning Tones - Wail, Whoop, Attack, Hi-Lo, Alert, Airhorn

System Options

- **SBC280** - Solar Power ¹
- **WPSBATT** - Delco S2000 or Interstate Workaholic 31-MHD Batteries
- **WPSNCMIC** - Noise Canceling Microphone
- Alternate Tone Set
- **RDVM** - Digital Voice Message Capability ²

NOTES:

- ¹ Solar power option includes 2 - 80 watt panels, mounting bracket and regulator
- ² **RDVM** - 1-16 message capability with 240, 480 or 960 seconds available for recording

Siren Activation Controls

Our VHF High and UHF Wide-Band siren activation control packages include the following:

- Radio
- Radio Interface
- Tone Squelch
- 2-3dB Gain Omni-Directional Antenna with Bracket
- 35' of RG58 Antenna Cable

- Polyphaser
- SI TEST®
- Low Battery Alarm (Two-Way only)

Other features are dependant upon one or two way controls. Whelen equipment can be interfaced with many different types of two-way radio communications products and systems including 800Mhz trunking, Motorola's MOSCAD, FSK, Narrow-Band and VHF Low Band. The following is available as standard options. Contact factory for special applications.

One-Way Controls

- **AUXIN** - Auxiliary Board for Contact Closure Activation
- **D2020LL** - 10 Digit DTMF Landline Activation
- **D2020H** - 10 Digit DTMF VHF High Band / 150-170 Mhz
- **D2020U** - 10 Digit DTMF UHF / 450-470 Mhz
- **WPSTT** - Two-Tone Sequential Option

Two-Way Controls

- **AUXCS** - Two-Way Contact Closure Activation and Status Board
- **C2020LL** - Two-Way Landline Activation
- **C2020H** - 10 Digit DTMF VHF High Band / 150-170 Mhz
- **C2020U** - 10 Digit DTMF UHF / 450-470 Mhz
- **C2020NH** - 10 Digit DTMF VHF High Band Narrow-Band
- **C2020NU** - 10 Digit DTMF UHF Narrow-Band

Options:

- **FSKXMOD** - Converts the Above Siren Activation Controls to FSK Format
- **STATUS** - Cabinet Window LED Status Indicator
- **PGINT** - Paging Interface to Interface Whelen Tones with Existing Paging Systems
- **INTRU** - Intrusion Alarm (available with two-way only)

Type III Electronic Cabinet



WHELEN[®] 2910 Specifications

Component	Height Inches (CM)	Width Inches (CM)	Depth Inches (CM)	Weight Lbs. (KG)
WPS2910 SPEAKER	132.9 (337.6)	33.4 (84.8)	—	558 (253.1)
ELECTRONICS CABINET TYPE III	64.4 (164)	30.0 (76)	10.0 (25.4)	220 (99.8)
POLE TOP BRACKET	30.5 (77)	12.0 (30.5)	See Drawing	71 (32)

Electrical

- **Battery Charger Input:** 120VAC, 60Hz, 7A Fuse (240 VAC 50/60 Hz available)
- **Battery Charger Output:** 28VDC, 10A (NOMINAL)
- **Batteries:** (4) 12V, 115AH Lead Calcium
- **Standby Current:** 135mA, 24VDC
- **Operating Current:** 221A, 24VDC
- **Power Amplifier Output Power:** Siren: 4000 Watts
Voice: 5000 Watts

Environmental

- **Operating Temperature:** -35°C to +60°C
- **Storage Temperature:** -65°C to +125°C
- **Humidity, Non Condensing:** 0 to 95%

Ordering Information

BASIC SYSTEM INCLUDES ALL OF THE FOLLOWING:

- **WPS2910** - Speaker Assembly & Electronics Cabinet
- OPTIONS:**
- **RDVM** - Remote Station Digital Voice ¹
- **AUXIN** - Auxiliary Board for Contact Closure Activation
- **AUXCS** - Auxiliary / Status Control Board for Contact Closure Activation and Status
- **D2020LL, D2020H, D2020U** - One-Way Radio Control ²
- **C2020LL, C2020H, C2020U** - Two-Way Radio Control / Status Monitoring, COMM/STAT^{™ 2}
- **C2020NH, C2020NU** - Two-Way Radio Control / Status Monitoring, COMM/STAT^{™ 2}
- **WPSTT** - Two-Tone Sequential
- **FSKXMOD** - FSK Format
- **STATUS** - Cabinet Window LED Status Indicator
- **PGINT** - Paging Interface to Interface Whelen Tones with Existing Paging Systems
- **INTRU** - Intrusion Alarm
- **SBC280** - Solar Power ³

NOTES

- 1 RDVM - 1-16 message capability with 240, 480 or 960 seconds available for recording
- 2 10 digit DTMF Controls • Landline • VHF High Band / 150-170 Mhz • UHF / 450-470 Mhz
Our VHF High and UHF siren activation control packages include tone squelch, radio, radio interface, 2-3dB gain omni-directional antenna with bracket, 35' of RG58 antenna cable and polyphaser
- 3 Solar power option includes 2 - 80 watt panels, mounting bracket and regulator

Acoustic Performance

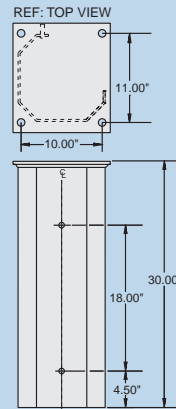
SPL @ 100': 129dB

Estimated 70dB range: 6,100'

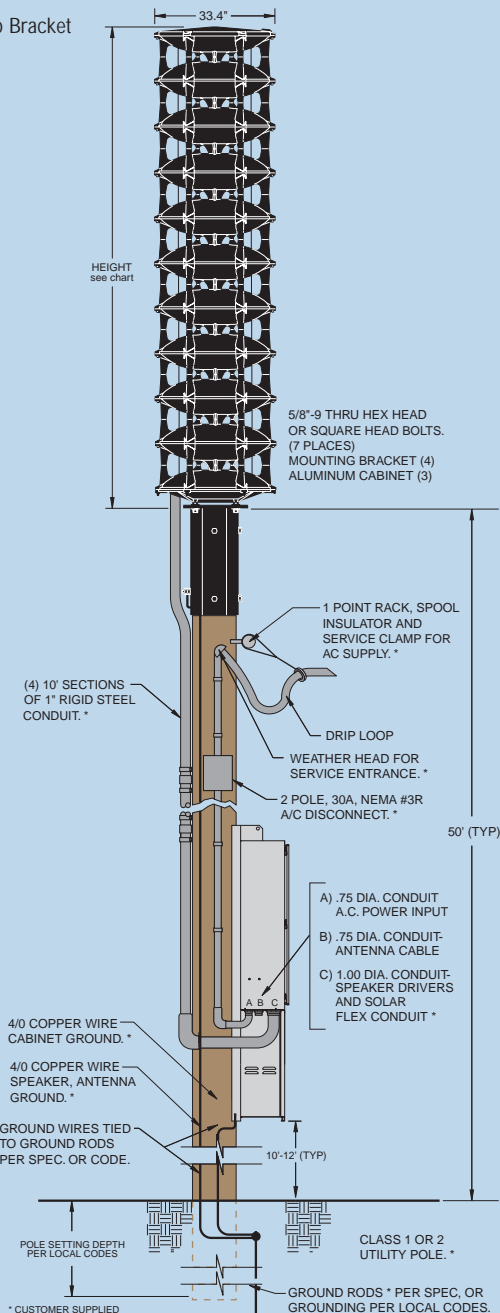
Estimated 60dB range: 12,200'

Note: 100' performance levels listed represent repeatable results within +/-1dB to stated levels.

Estimated 70dB perimeter is based on the Federal Emergency Management Agency's (FEMA) -10dB per distance doubled path model.



Pole Top Bracket



WHELEN[®]
ENGINEERING COMPANY, INC.

PUBLIC WARNING PRODUCTS

Route 145, Winthrop Road
Chester, Connecticut 06412-0684

(860) 526-9504

1-800-637-4736

Fax: (860) 526-4784

Internet: www.whelen.com

e-mail: iowsales@whelen.com

Whelen Engineering Company, Inc.
reserves the right to upgrade its products with design
improvements without notification.

© 2006 Whelen Engineering Company, Inc.

Printed in the U.S.A.

121406-11693B